

VJ EP-Retainer

Exposed Wind Uplift Fastener

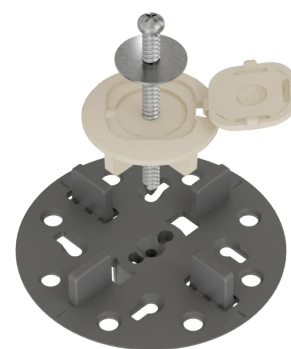


VJ EP-Retainer (EPR) is designed to provide a high wind uplift resistance for roof pavers supported on VersiJack® pedestals. **The 5 mm height of the EPR above the paver surface complies with Australian Standard AS1428.**

EPR comprises a robust UV-stabilised thermoplastic Cap, stainless steel Washer and specially designed thermoplastic Spacer Tab. When fastened, the stainless steel screw fastens the EPR onto the proprietary locking Spacer Tab and ensures the assembly is extremely difficult to dislodge from the VersiJack® pedestal.

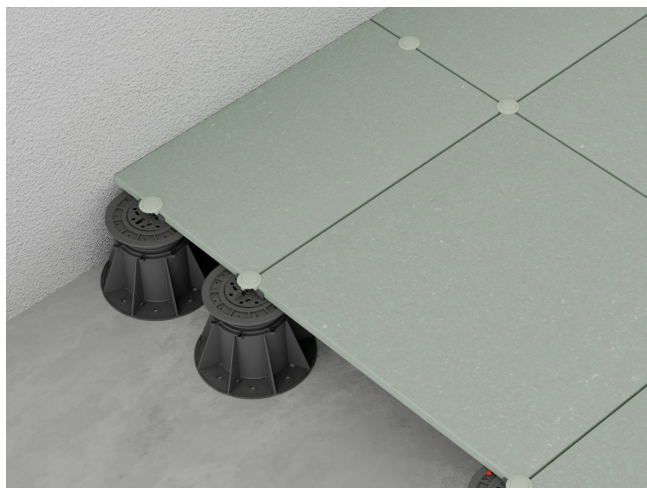
The ribs of the EPR can be configured for stack and stretcher bond layouts, and between pavers along the perimeter. The hinged cover is tightly secured to the EPR Cap but can be easily pried open with a small screwdriver or similar flat tool.

EPR is manufactured with a high strength engineering plastic with UV-stabilisers. The standard colour is black and paver gap is 4 mm. For customised colour and paver gap, contact our technical consultants for details.





Stretcher Bond Layout



Stack Bond Layout

Distinctive Features

- Accommodates stack bond and stretcher bond layouts and between pavers along the perimeter.
- Easily removed for quick access/inspection of waterproof membranes or service lines.
- Suitable for all paver types without any modifications.

*Disclaimer: EPR is designed and independently tested in Australia to significantly increase wind uplift resistance, but under no circumstances guarantee absolute wind uplift resistance. The Specifier and/or User should take into consideration other variables of site conditions that may determine the effectiveness of the system.

Note: The information provided in this brochure is based on current knowledge and experience and does not infer any legally binding assurance or warranty, expressed or implied. Intending purchasers should verify whether any changes to specifications or applications or otherwise have been made since the issue of this literature. Environmentally-friendly recycled materials are used in product manufacture wherever possible. Physical product properties including colour may differ due to source of raw materials used. Colour may also fade due to UV exposure. All components of the product are designed for specific application, design calculations and any variation and/or deviation therefrom shall be the responsibility of the Specifier and/or User.

ELMICH PTE LTD www.elmich.com

Singapore: +65 6356 2800 Australia: +61 2 9648 2073

info@elmich.com

Singapore | Australia | Germany | Malaysia | Switzerland | USA

