

EnviroMix® PB

Planting Board



EnviroMix® PB is a lightweight organic planting board manufactured from environmentally sustainable materials enhanced with additives, including nutrients beneficial for healthy plant growth.



EnviroMix® PB

EnviroMix® PB is made up of primarily recycled organic products that have undergone microwave sterilisation. It is an ideal planting medium for green roofs where weight is a major consideration.

EnviroMix® PB weighs less than half the weight of conventional planting media. It has the ability to absorb and retain water 3 times its weight and yet remain lighter than conventional media which when saturated holds much lesser water. The high water retention, in addition to reducing irrigation frequency, also enables plants to better withstand dry spells and harsh conditions on roofs subjected to strong winds and high temperatures. Integrated nutrients in **EnviroMix® PB** reduces the need for additional fertilizers and thus provide related cost savings.

EnviroMix® PB provides good thermal insulation which translates to greater energy efficiency and cost savings. Trials by an independent research institute in Singapore conclude that temperature differences of up to 20°C can

be achieved by the installation of **EnviroMix® PB** on the rooftop. **EnviroMix® PB** in modular form is easy to handle both for transportation and installation. Groundcover plants and shrubs may be planted to create green spaces instantly by adding between 50 mm to 100 mm of soil mix before planting. For planting of turf, simply lay the grasses directly over the **EnviroMix® PB** and thus avoid mess from handling loose media. **EnviroMix® PB** can also be used in potting mix as a soil conditioner to provide additional nutrients to the existing mix.

EnviroMix® PB allows plant roots to penetrate and remains intact even after repeated watering. This enables the roots to establish firmly and form a bio mass with the **EnviroMix® PB** that resists erosion, making it also suitable for planting on gentle slopes.



EnviroMix® PB (with preformed holes)

Features & Advantages

Physical properties

- Panel form enables easy transportation
- Less than half weight of conventional soil mix
- Microwave sterilisation ensures panels are pest and pathogen-free
- Stackability reduces storage space requirements
- Does not stain

Flexibility

- Superior water retention supports plant growth during dry spells
- Integrated nutrients facilitate quick establishment and healthy plant growth
- Suitable for most groundcover plants and shrubs
- Easily cut for flexible design and layout

Cost-effective

- Fast installation as panels are simply abutted against each other
- Minimal soil-mix required - none required for turfing
- Reduces fertilization frequency and dosage

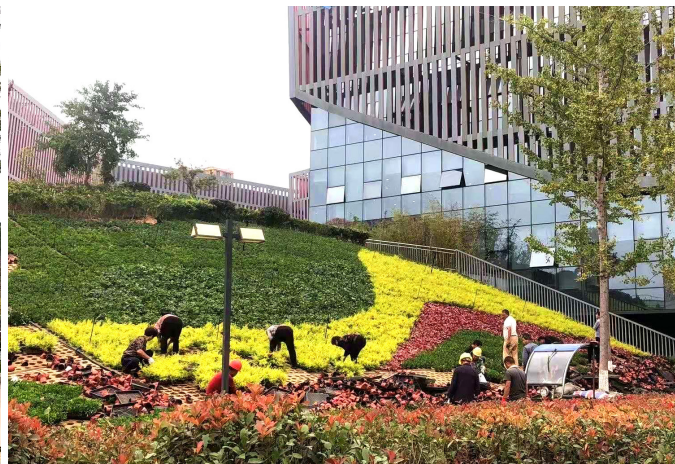
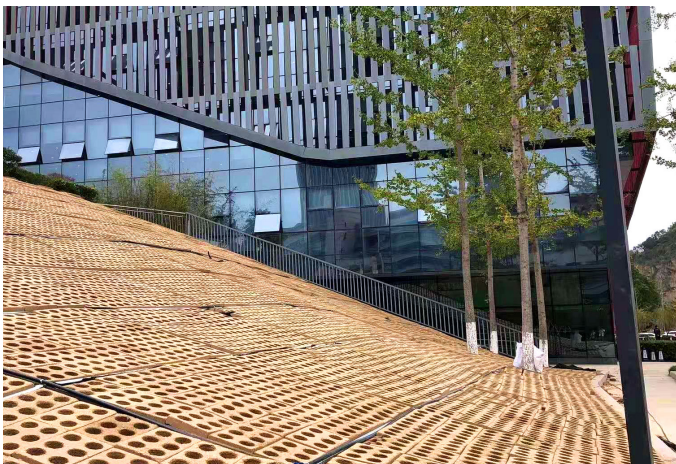
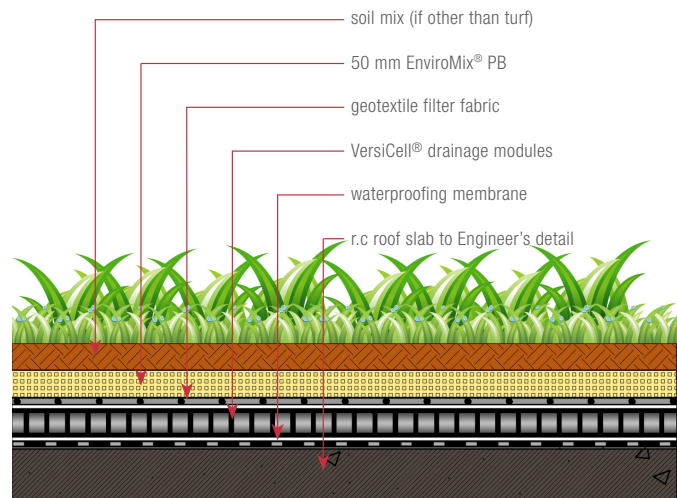
Technical Specifications

Dimensions

- **without preformed holes** 498 x 333 x 50 mm
- **with preformed holes** 500 x 330 x 70 mm
 - **hole size** 65 x 65 x 50 mm depth

Weight

- **dry** approx. 14.4 kg/m²
- **saturated** approx. 45.0 kg/m²



Note: The information provided in this brochure is based on current knowledge and experience and does not infer any legally binding assurance or warranty, expressed or implied. Intending purchasers should verify whether any changes to specifications or applications or otherwise have been made since the issue of this literature. Environmentally-friendly recycled materials are used in product manufacture wherever possible. Physical product properties including colour may differ due to source of raw materials used. Colour may also fade due to UV exposure. All components of the product are designed for specific application, design calculations and any variation and/or deviation therefrom shall be the responsibility of the specifier and/or user.



ELMICH PTE LTD www.elmich.com

Singapore: (+65) 6356 2800

info@elmich.com

Singapore | Australia | Germany | Switzerland | USA

