

Eurathane® 3000

Seamless Elastomeric Waterproof Coating



We make the difference.
The Elmich Difference.

Eurathane® 3000

Eurathane® 3000 is a UV-resistant, high solids and high performance, single-component moisture-cured polyurethane waterproof coating.

About Eurathane® 3000

Eurathane® 3000 is cold-applied directly by brush, roller, squeegee, or trowel, to form a seamless elastomeric waterproofing coating. Eurathane® 3000 may be applied over concrete, stone, brick, cement blocks, wood, metal, asbestos and most other surfaces.

Components

- 1 Eurathane® 3000
- 2 Eurathane® 3000 Top Coat
(required for colour stability and prevent chalking)
- 3 Eurathane® Primer or Eurathane® Metal Primer
(for metal substrate)



Eurathane® 3000

Installation Procedure

Eurathane® 3000 should be applied by brush, roller or trowel to obtain a continuous, unbroken film. It should be applied at a rate of 0.75 litre/m²/coat. Two coats are recommended, allowing the first to fully dry prior to application of the second. A dry film thickness of 1.0 mm to 1.2 mm is recommended.

Apply Eurathane® 3000 Top Coat at a rate of 0.2 kg to 0.3 kg per sqm where Eurathane® 3000 is to be exposed to weather.

Extremely porous substrates should be primed with a high penetration solvent-based polyurethane primer prior to coating. Application must be made uniformly to avoid pin holes.

As with all waterproofing treatments, it is essential that Eurathane® 3000 is protected from mechanical damage during subsequent construction work or backfilling.

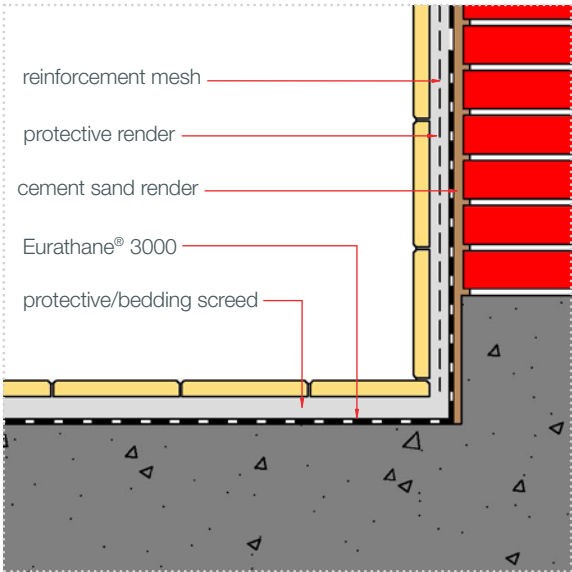
Eurathane® 3000 is resistant to frost, but adhesion may be impaired when applied to substrates that are frozen or frosted. Treatment should be avoided if temperatures are likely to fall below 5°C during application.

Surfaces upon which Eurathane® 3000 is to be applied should be dry, smooth, sound and free from honeycombs, protrusions, voids, laitance, dust, loose material, paint, oil, curing agent or any other contaminants. Blockwork should be smoothly rendered and brickwork flush pointed.

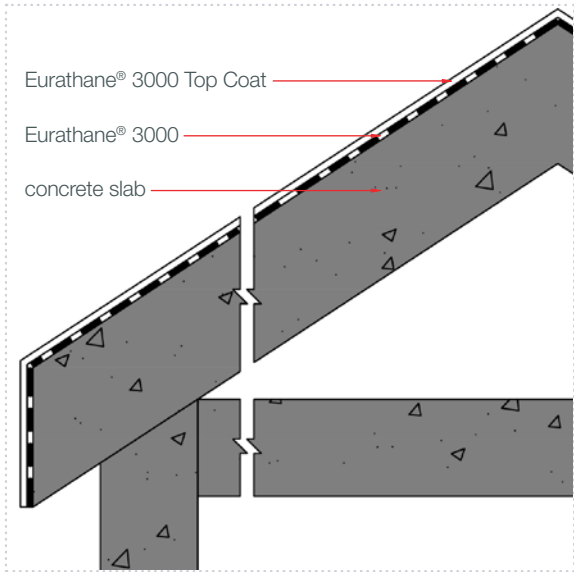


Eurathane® 3000 Top Coat

Typical Details



Wet Area



Concrete Pitch Roof

Projects



Millenia Walk, Singapore



Republic Polytechnic, Singapore

Technical Specifications

Eurathane 3000

Specific weight	1300 kg/m ³
Service temperature	-40°C to 80°C
Drying time @ 25°C	6 h
Recoat time @ 25°C	6 to 24 hrs
QUV Accelerated Weathering Test (ASTM G53)	Passed (2000 hrs)
Hardness Shore A (ASTM D2240)	70
Adhesion to substrate (ASTM D4541)	>2 N/mm ²
Water vapour transmission (ASTM E96-93)	72 g/m ² .h
Tensile strength (ASTM D412)	>5.5 N/mm ²
Elongation (ASTM D412)	>500%

Eurathane 3000 Top Coat

Set to touch @ 25°C	30 mins–2 hrs
Pot life	3 hrs
Full cure	24–48 hrs

Eurathane Primer

Colour	Transparent
Viscosity (cps @ 25°C)	<300
Density (g/cm ³)	0.95–0.99

Advantages

- Low VOC
- Easily applied to complex and irregular shapes
- Excellent flexibility and elongation
- Maintains a waterproof seal over a wide range of temperatures



Elmich Pte Ltd

t (65) 6356 2800
e info@elmich.com

Singapore • Australia • Malaysia
Switzerland • Germany • USA

Note The information provided in this brochure is based on current knowledge and experience and does not infer any legally binding assurance or warranty, expressed or implied. Intending purchasers should verify whether any changes to specifications or applications or otherwise have been made since the issue of this literature. Environmentally-friendly recycled materials are used in product manufacture wherever possible. Physical product properties including colour may differ due to source of raw materials used. Colour may also fade due to UV exposure. All components of the product are designed for specific application, design calculations and any variation and/or deviation therefrom shall be the responsibility of the specifier and/or user.