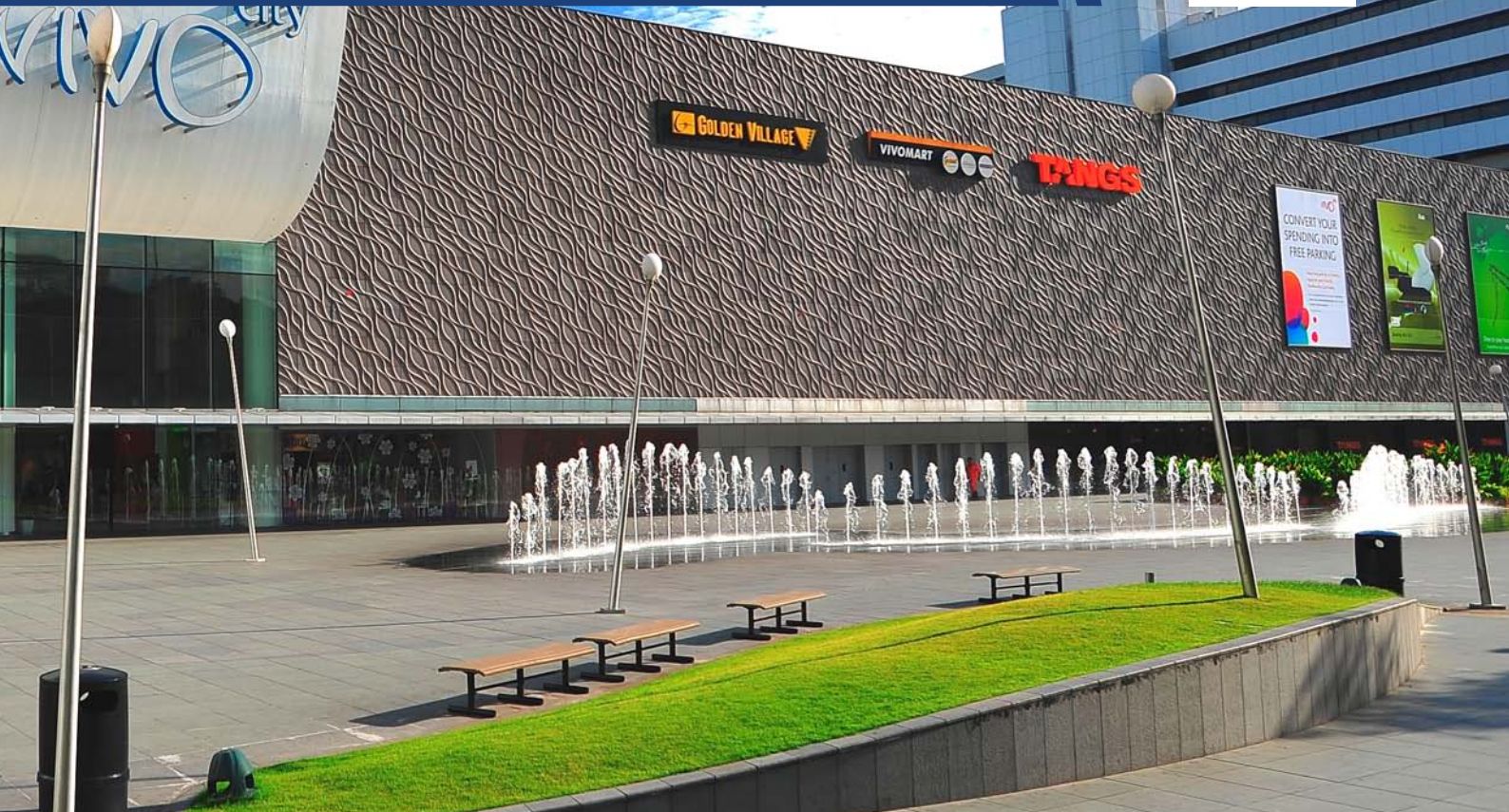


# Fleximent® 201

Flexible Cementitious Waterproof Coating



## About Fleximent® 201

Fleximent® 201 is a two-component, flexible cementitious waterproof coating comprising of a proprietary synthetic resin dispersion and a blend of selected cement and graded fillers. Once cured, the membrane allows entrapped water vapour to escape but yet remain impermeable to water.

### Advantages

- Flexible, adheres to most surfaces and fills hairline cracks
- Excellent resistance to wear, weather, abrasion, aggressive soils and contaminated ground water.
- Acts as an effective waterproof coating for floors, walls, water retaining structures and planter boxes.

### Benefits

Fleximent® 201 acts as an effective waterproof coating for floors, walls, water retaining structures and planter boxes. Fleximent® 201 may be applied onto surfaces in contact with potable water and damp surfaces. It contains no chlorine and salts that cause corrosion and efflorescence and is resistant to frost and thawing salts.



### Meets BS 6920:90

Fleximent® 201 meets the requirements of British Standard BS 6920:90 and Singapore Standard SS 375:94 for suitability of products in contact with water intended for human consumption.

# Installation Procedures

Surfaces should be clean, free from honeycombs, voids, dirt, loose material, paint, oil, curing agents or other contaminants.

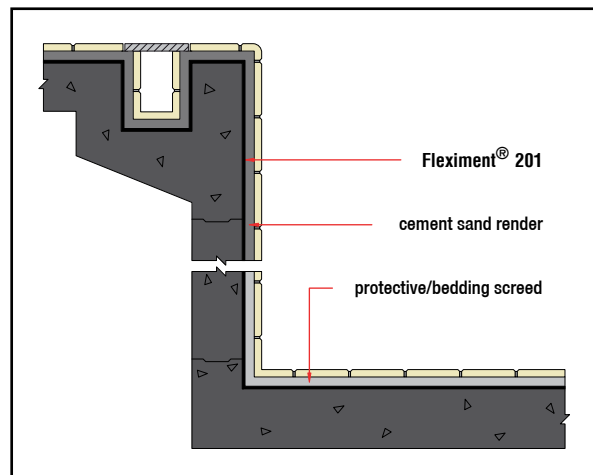
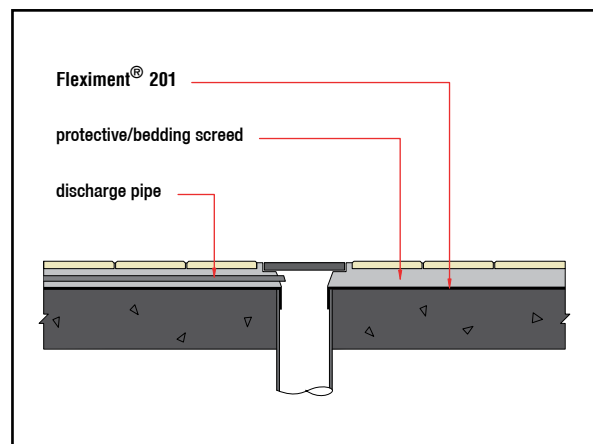
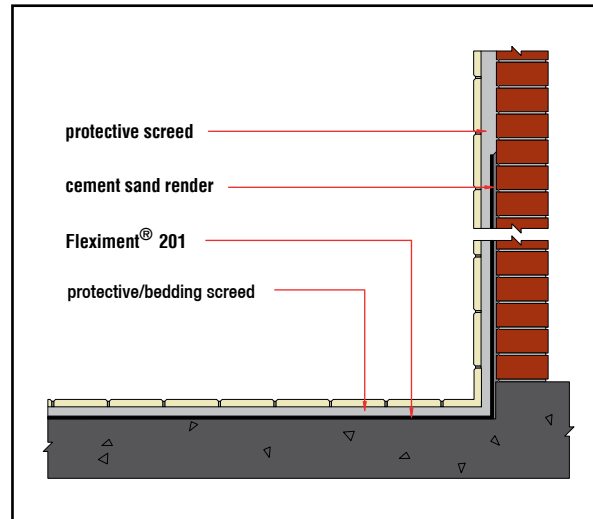
Prior to application, dampen substrate with a brush or roller.

- Pour Part A (liquid) into a clean container.
- Pour Part B (powder) slowly into Part A.
- Mix with a low speed drill fitted with purpose-made paddle
- Ensure that mix is homogeneous and lump-free.

Apply **Fleximent® 201** by squeegee, roller or brush to horizontal and vertical surfaces. Ensure that air is not entrapped in the membrane. Apply slurry with a brush at joints and corners ensuring that areas are worked and covered well. Allow curing to take place completely before applying second coat.

Protect freshly applied surfaces from strong sunlight and drying wind with a polyethylene sheet. Cover **Fleximent® 201** with protective screed as soon as possible once cured. Exercise care to prevent damage to waterproofing during subsequent construction work prior to laying of protection screed.

Apply **Fleximent® 201** in 2 coats at 1.0 kg – 1.1 kg per sq.m. per coat for final dry film thickness of approximately 1.2 mm.



# Technical Specification

Mix density	1300 kg/m <sup>3</sup>
Mixed colour	Grey
Pot life @ 35°C	approx. 1 hour
Drying time	1 – 3 hours
Water penetration test	0, no water penetration (DIN 1048)
Crack bridging	2 mm (ASTM C836)
Hardness Shore A	>50 (ASTM D2240)
Adhesion to substrate	>1.0 N/mm <sup>2</sup>
Water vapour transmission	<21 g/m <sup>2</sup> .d (ASTM E96-93)
Tensile strength	>1.6 N/mm <sup>2</sup> (ASTM D412)
Elongation at break	>150% (ASTM D412)

# Health and Safety

Do not allow **Fleximent® 201** to be contaminated by other materials. Gloves and goggles should be worn. Any splashes to the skin or eye should be washed off with clean water. Store in cool and dry place.

# Distributed by:

**Note:** The information provided in this brochure is based on current knowledge and experience and does not infer any legally binding assurance or warranty, expressed or implied. Intending purchasers should verify whether any changes to specifications or applications or otherwise have been made since the issue of this literature. Environmental-friendly recycled materials are used wherever possible and physical product properties including colour may differ due to source of raw materials used. Colour may also fade due to UV exposure. All components of the product are designed for specific application design calculations and any variation and/or deviation therefrom shall be the responsibility of the Specifier and/or User.



**ELMICH PTE LTD** [www.elmich.com](http://www.elmich.com)

Singapore: (+65) 6356 2800

info@elmich.com

Singapore | Australia | Germany | Malaysia | Switzerland | USA



Management System  
ISO 9001:2015  
ISO 14001:2015  
ISO 22301:2012  
www.luv.com  
ID: 810067487

