

PAVING

VF Support Pad

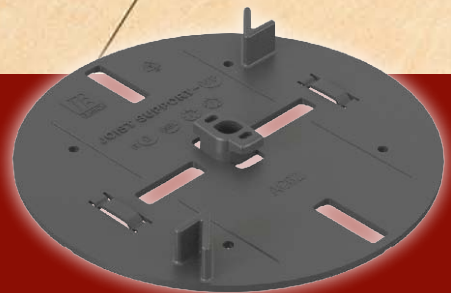
Joist Support Pad



Creating Cities
Where Urban Meets Nature

Our Innovation Your Solution

VF Support Pad is a fixed joist support for raised paving systems of minimal height. The elevated system allows for sufficient air circulation and improved drainage underneath pavers.



VF Support Pad

VF Support Pad is a fixed height joist support for raised paving systems. It accommodates environments with low height constraints whilst providing air circulation and drainage underneath pavers.

About VF Support Pad

VF Support Pads are connected to VersiFrame® joist substructure and restricts unintended movement during maintenance and everyday traffic.

VF Support Pads are used to elevate pavers to create leveled surfaces while ensuring water drains freely underneath the pavers.

VF Support Pads are also available in TPE, which has superior properties in noise reduction, shock absorption, and traction to prevent slipping on sloped surfaces.



VersiFrame[®] Accessories

1

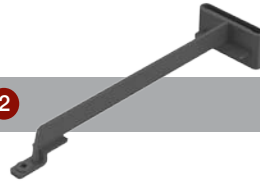


Joist Spacer Tab

Joist Spacer Tab separates pavers by a gap of 3 mm, 4 mm, 8 mm and can be configured to accommodate different paver layouts.



2



Side Wall Spacer

Side Wall Spacer extends the end of a joist when it is a distance from the wall while ensuring a gap of 10 mm between pavers and the wall.



3



End Wall Spacer

End Wall Spacer covers the end of a joist when it is against the wall while ensuring a gap of 10 mm between pavers and the wall.



4

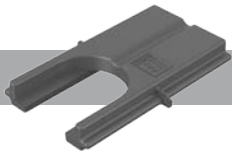


Perpendicular Joist Joiner

Perpendicular Joist Joiner allows one end of a joist to connect perpendicularly along the length of another joist.



5

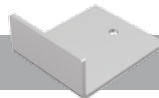


Straight Joist Joiner

Straight Joist Joiner is a concealed joiner that connects 2 joists in a straight line.

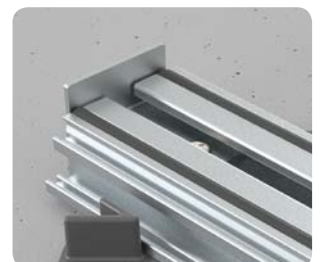


6



End Restrainer

End restrainer ensures that pavers do not slip off by closing off the perimeter edge of the paving area.

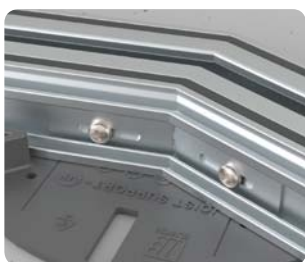


7

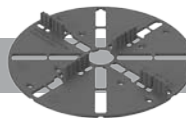


Angled Joist Joiner

Angled Joist Joiner is a stainless steel joiner that connects 2 joists in a straight line or at an angle.

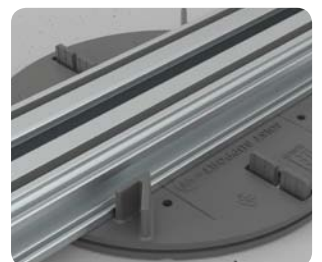


8



VP Extender

VP Extender is used as a fixed base extender for an additional 4 mm height.



**only compatible with VF 35R*

Technical Specifications

Material	PP/TPE
Height (mm)	4
Base diameter (mm)	165
Design span distance for joist support (mm)	400 - 600
Biological / Chemical resistance	Unaffected by moulds and algae. Resistant to corrosion

Advantages

- 1 Protects underlying surface
- 2 Facilitates rapid drainage and air circulation
- 3 Quick and easy installation
- 4 Cost-effective system for raised paving
- 5 Reduces sound and vibration transmission



The Elmich security hologram ensures authenticity of the products.

Distributed by:

Note: The information provided in this brochure is based on current knowledge and experience and does not infer any legally binding assurance or warranty, expressed or implied. Intending purchasers should verify whether any changes to specifications or applications or otherwise have been made since the issue of this literature. Environmentally-friendly recycled materials are used in product manufacture wherever possible. Physical product properties including colour may differ due to source of raw materials used. Colour may also fade due to UV exposure. All components of the product are designed for specific application, design calculations and any variation and/or deviation therefrom shall be the responsibility of the specifier and/or user.



ELMICH PTE LTD www.elmich.com

Singapore: (+65) 6356 2800

info@elmich.com

Singapore | Australia | Germany | Malaysia | Switzerland | USA



Management System
ISO 9001:2015
ISO 14001:2015
ISO 22301:2012
www.tuv.com
ID 9105067487

