

DeckLink RT

Hidden Fastener for Removable Timber Tiles



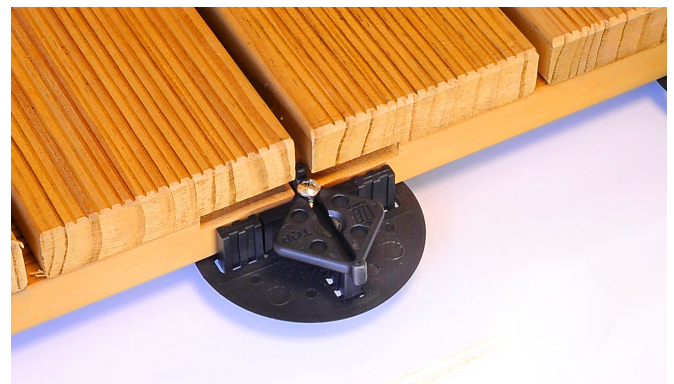
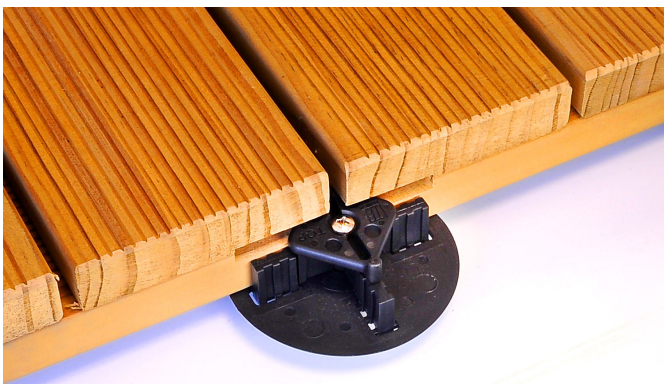
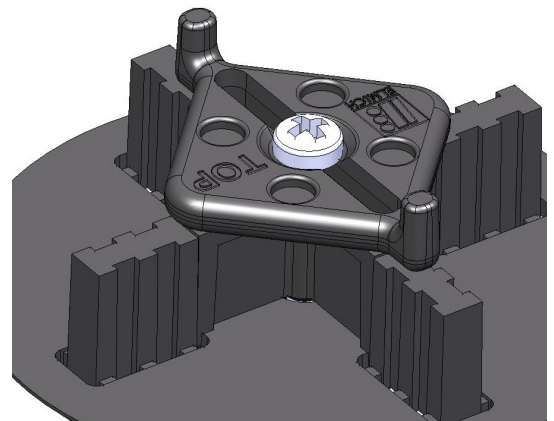
DeckLink RT is for securing timber tiles in building raised decks supported on Elmich pedestals.

DeckLink RT is for building timber tile decks with hidden fixings. It allows individual deck tiles to be removed and/or replaced for maintenance and access to services beneath the deck without removing and potentially damaging several tiles.

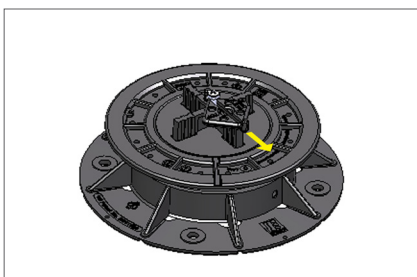
DeckLink RT is a diamond shaped fastener that holds the deck tiles in place utilising the slots in the sides, with a screw that attaches to the tile spacer for fixing the DeckLink RT to a pedestal.

DeckLink RT is designed for gaps between the deck tiles of either 5 or 6 mm wide, which matches the gaps between the individual boards in the deck tiles.

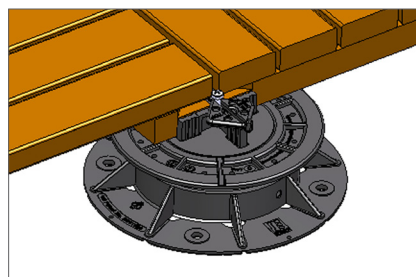
DeckLink RT Fastening Disc slides in 2 directions to secure or release the tiles by pushing against the posts at the ends of the fastener through the gap between the tiles after slightly loosening the screw.



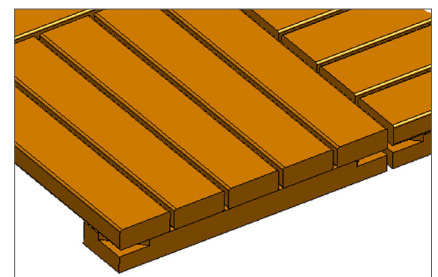
Installation



Step 1
Loosen screw and slide
Fastening Disc to one side.



Step 2
Place tiles on side away from
Fastening Disc.



Step 3
Insert remaining tiles. Slide
Fastening Disc, aligning its centre
with the centre of an Elmich pedestal.
Tighten screw.



The Elmich security hologram ensures authenticity of the products.

Distributed by:

Note: The information provided in this brochure is based on current knowledge and experience and does not infer any legally binding assurance or warranty, expressed or implied. Intending purchasers should verify whether any changes to specifications or applications or otherwise have been made since the issue of this literature. Environmentally-friendly recycled materials are used in product manufacture wherever possible. Physical product properties including colour may differ due to source of raw materials used. Colour may also fade due to UV exposure. All components of the product are designed for specific application, design calculations and any variation and/or deviation therefrom shall be the responsibility of the specifier and/or user.



ELMICH PTE LTD www.elmich.com

Singapore: (+65) 6356 2800

info@elmich.com

Singapore | Australia | Germany | Malaysia | Switzerland | USA

