

Eurathane® 3000

Seamless Elastomeric Waterproof Coating



About Eurathane® 3000

Eurathane® 3000 is a UV-resistant, high solids and high performance, single-component moisture-cured polyurethane waterproof coating. It is cold-applied directly by brush, roller, squeegee or trowel, to form a seamless elastomeric waterproofing coating. **Eurathane® 3000** may be applied over concrete, stone, brick, cement blocks, wood, metal, asbestos and most other surfaces.

Advantages

- Excellent flexibility and elongation
- Maintains a waterproof seal over a wide range of temperatures
- Easily applied to complex and irregular shapes to form a seamless waterproofing coating
- Low VOC

Meets ASTM 836

Eurathane® 3000 provides an effective waterproofing coating for floors, walls and water retaining structures and as a damp-proof membrane in sandwich constructions in accordance with BS 8102:2009 (Code of Practice for protection of below ground structures against water from the ground).



Benefits

Eurathane® 3000 provides effective external protection against aggressive soils and contaminated ground water. It adheres to most building surfaces including concrete, felt and metal whether horizontal or vertical.

Installation Procedures

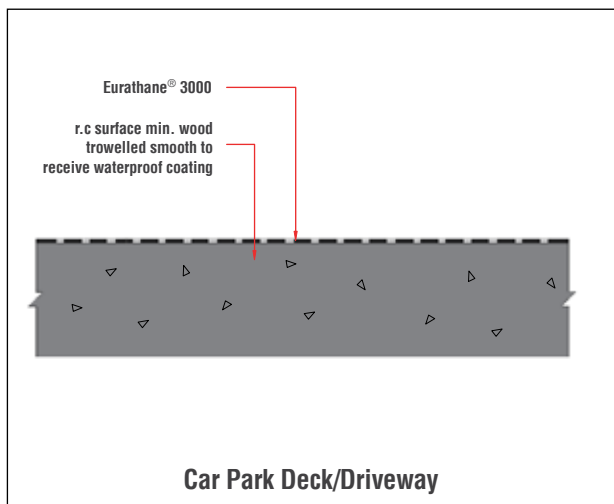
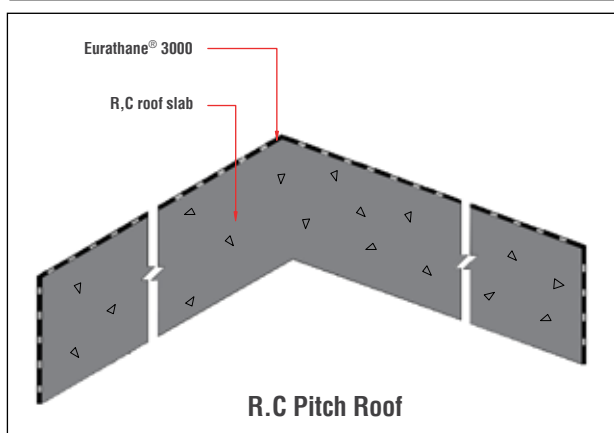
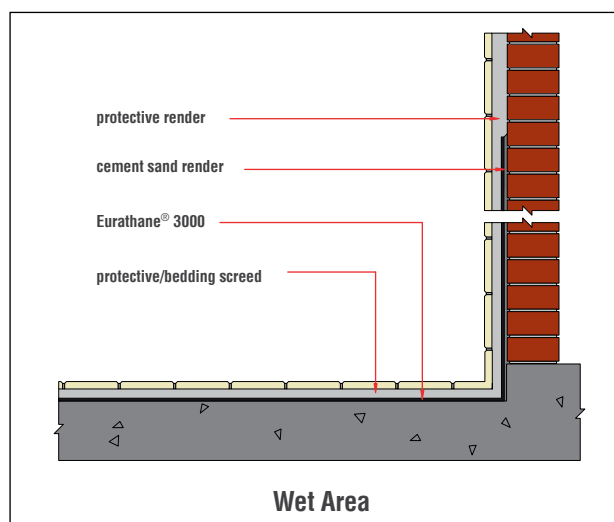
Eurathane® 3000 should be applied by brush, roller, squeegee or trowel to obtain a continuous, unbroken film. It should be applied at a rate of 0.75 litre/m²/coat. Two coats are recommended, allowing the first to fully dry prior to application of the second. A dry film thickness of 1.0 mm to 1.2 mm is recommended.

Extremely porous substrates should be primed with a high penetration solvent-based polyurethane primer prior to coating. Application must be made uniformly to avoid pin holes.

As with all waterproofing treatment, it is essential that **Eurathane® 3000** is protected from mechanical damage during subsequent construction work or backfilling.

Eurathane® 3000 is resistant to frost, but adhesion may be impaired when applied to substrates that are frozen or frosted. Treatment should be avoided if temperatures are likely to fall below 5°C during application.

Surfaces on to which **Eurathane® 3000** is to be applied should be dry, smooth, sound and free from honeycombs, protrusions, voids, laitance, dust, loose material, paint, oil, curing agent or any other contaminants. Blockwork should be smooth rendered and brickwork flush pointed.



Technical Specification

Specific weight	1300 kg/m ³
Service temperature	- 40 ^o C to 80 ^o C
Drying time @ 25°C	6 h
Recoat time @ 25°C	6 to 24 hrs
QUV Accelerated Weathering Test (ASTM G53)	Passed (2000 hrs)
Hardness Shore A (ASTM D2240)	70
Adhesion to substrate (ASTM D4541)	> 2 N/mm ²
Water vapour transmission (ASTM E96-93)	72 g/m ² .h
Hardness shore A (ASTM D2240)	27
Tensile strength (ASTM D412)	> 5.5 N/mm ²
Elongation (ASTM D412)	> 500%

Distributed by:

Note: The information provided in this brochure is based on current knowledge and experience and does not infer any legally binding assurance or warranty, expressed or implied. Intending purchasers should verify whether any changes to specifications or applications or otherwise have been made since the issue of this literature. Environmental-friendly recycled materials are used wherever possible and physical product properties including colour may differ due to source of raw materials used. Colour may also fade due to UV exposure. All components of the product are designed for specific application, design calculations and any variation and/or deviation therefrom shall be the responsibility of the specifier and/or user.



ELMICH PTE LTD www.elmich.com

Singapore: (+65) 6356 2800

info@elmich.com

Singapore | Australia | Germany | Malaysia | Switzerland | USA



© Elmich Pte Ltd

EU3000/001-V2-0716SG

Health and Safety

Eurathane® 3000 contains a flammable solvent. All necessary precautions should be taken in both storage and use. Store in closed containers in cool, dry conditions away from any ignition source.