

VersiWall® GT

Fire-Resistant Green Wall



Creating Cities
Where Urban Meets Nature

Our Innovation Your Solution

VersiWall® GT is a modular green wall system which gives architects and developer-owners flexible and cost-effective solutions to create living walls for both indoor and outdoor greenery. Manufactured from anodized aluminium, VersiWall® GT fulfils fire safety requirements, particularly for indoor green walls. The system offers new possibilities in creative design using a palette of plants to shape and erect environmentally beneficial and aesthetically pleasing living walls.

Fully Recyclable



About VersiWall® GT

VersiWall® GT is a modular green wall system which gives architects and builders flexible and cost-effective solutions to create living walls for both indoor and outdoor greenery. Manufactured from aluminium, VersiWall® GT consists of rows of pilasters attached to a wall, onto which the trays and irrigation system hook.

The aluminum material is extremely durable and importantly, fulfils fire safety requirements for indoor green walls. Additionally, the extruded pilasters and trays can be easily cut to any length both on and off-site for a high level of flexibility to allow creativity in design.

Advantages

- Fire-Resistant
- Durable
- Anti-lift screws prevent tray dislodgment
- Fast & simple modular installation
- Integrated irrigation
- Fully recyclable

Distinctive Features

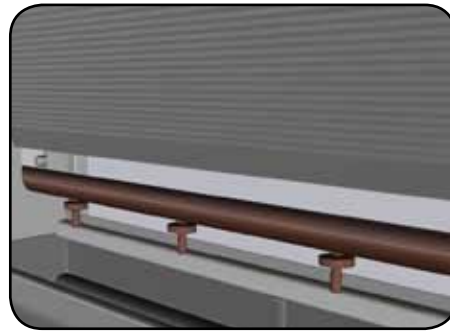
Simple Installation

A hook-on pilaster system ensures fast installation times. Coupling bolts support the modular trays and allow them to easily drop into place onto the pilasters.



Integrated Irrigation*

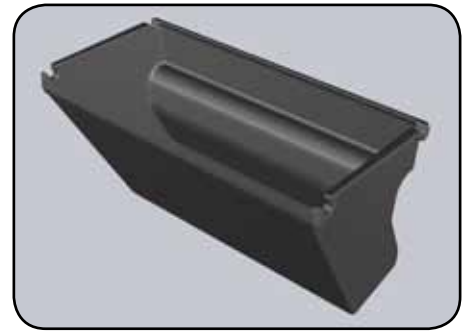
Irrigation piping is kept neatly hidden behind the plants in an organised manner. The pipes can be pre-configured and simply slotted into place using the irrigation channels in the pilasters.



*Irrigation piping not included.

Tray Liner

Tray liners allow the trays to be pre-planted to expedite installation times and enables the establishment of an instant mature green wall.



Technical Specifications

VersiWall® GT

Material	Anodized Aluminium
Colour	Black
Size	
Tray	1000 mm* (W) x 125 mm (H) x 95 mm (D)
Pilaster	38 mm (W) x 1200 mm* (H) x 108 mm (D)
Tray Pitch	200 mm
Weight	~15 kg/m ² (unplanted)
	~70 kg/m ² (planted)

* Can be cut to length as required.



Planting Tray

Pilaster

Irrigation & Fertilisation System*

*Irrigation piping not included.

Tray Liner



Look for the Elmich security hologram applied on all our products to ensure best quality and original Elmich product.

Distributed by:

Note: The information provided in this brochure is based on current knowledge and experience and does not infer any legally binding assurance or warranty, expressed or implied. Intending purchasers should verify whether any changes to specifications or applications or otherwise have been made since the issue of this literature. Environmentally-friendly recycled materials are used in product manufacture wherever possible. Physical product properties including colour may differ due to source of raw materials used. Colour may also fade due to UV exposure. All components of the product are designed for specific application, design calculations and any variation and/or deviation therefrom shall be the responsibility of the specifier and/or user.



ELMICH PTE LTD www.elmich.com

Singapore: (+65) 6356 2800

info@elmich.com

Singapore | Australia | Germany | Malaysia | Switzerland | USA

