

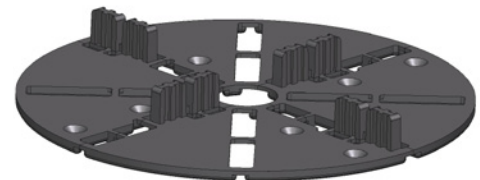
VersiPave® 4P

VersiPave® 4P (VP-4P) is an ultra-low fixed-height pedestal designed to support concrete, stone, tile and timber pavers. It also creates a drainage layer which reduces efflorescence and algae growth.

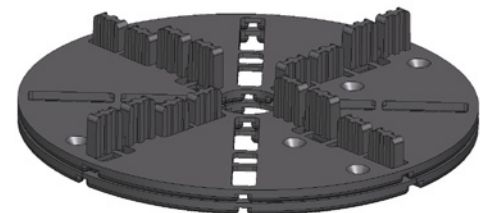
VersiPave® 4P integrated spacer posts maintain paver positions and a consistent gap between pavers. When installed over waterproofing membrane, the smooth and large VP-4P base measuring 4 mm in height and 170 mm in diameter prevents physical damage of the membrane during placement of pavers.

VP-4P may be double-stacked to achieve an effective height of 8 mm. Further height adjustments are possible using Elmich 1 mm and 2 mm Neoprene shims. The 12 mm high spacer tabs do not protrude above the finished paved surface when used with low profile pavers.

VP-4P may be separated into halves or quarters to enable flush placement along wall edges and also into and around corners.

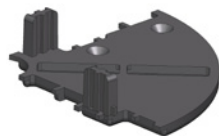


Single VP-4P as 4 mm pedestal

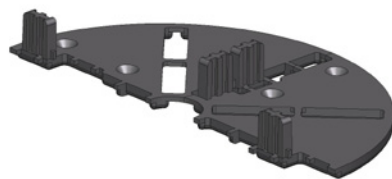


Double VP-4P as 8 mm pedestal

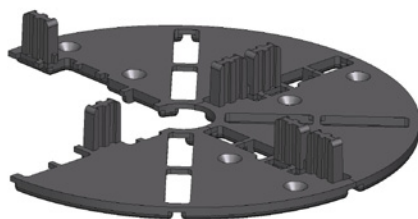
Sectioned design feature of VP-4P for various applications:



1/4 VP-4P into corner



1/2 VP-4P along wall edge



3/4 VP-4P around corner

Advantages

- Suitable for all types of pavers
- Maintains position and gaps between pavers
- Provides drainage layer beneath pavers
- Protects waterproofing membrane
- Not visible above paver surface
- Cost-effective and simple installation
- Manufactured from environmentally-friendly recycled polypropylene

Applicable Areas

- Roof terraces
- Balconies
- Plant room access
- Courtyards
- Podium decks

VersiPave® 4P is part of our Paver & Bearer Support range of adjustable Elmich pedestals (4 mm - 1024 mm)



A security hologram has been applied on all our products to ensure that the end-user receives the best quality and original Elmich product.

Distributed by:

Note: The information provided in this brochure is based on current knowledge and experience and does not infer any legally binding assurance or warranty, expressed or implied. Intending purchasers should verify whether any changes to specifications or applications or otherwise have been made since the issue of this literature. Environmentally-friendly recycled materials are used in product manufacture wherever possible. Physical product properties including colour may differ due to source of raw materials used. Colour may also fade due to UV exposure. All components of the product are designed for specific application, design calculations and any variation and/or deviation therefrom shall be the responsibility of the specifier and/or user.



ELMICH PTE LTD www.elmich.com

Singapore: (+65) 6356 2800

info@elmich.com

Singapore | Australia | Germany | Switzerland | United States



Management System
ISO 22301:2012
www.tuv.com
ID 9105067487



Management System
ISO 9001:2008
www.tuv.com
ID 9105067487

