

Eurathane® 2000

Seamless Elastomeric Waterproof Coating



About Eurathane® 2000

Eurathane® 2000 is a high solids and high performance, single-component moisture-cured polyurethane waterproof coating. It is cold-applied directly by brush, roller, squeegee or trowel, to form a seamless elastomeric waterproofing coating. **Eurathane® 2000** may be applied over concrete, stone, brick, cement blocks, wood, metal, asbestos and most other surfaces.

Advantages

- Excellent flexibility and elongation
- Maintains a waterproof seal over a wide range of temperatures
- Easily applied to complex and irregular shapes to form a seamless waterproofing coating
- Low VOC

Meets ASTM 836

Eurathane® 2000 provides an effective waterproofing coating for floors, walls and water retaining structures and as a damp-proof membrane in sandwich constructions in accordance with BS 8102:2009 (Code of Practice for protection of below ground structures against water from the ground).



Benefits

Eurathane® 2000 provides effective external protection against aggressive soils and contaminated ground water. It adheres to most building surfaces including concrete, felt and metal whether horizontal or vertical.

Installation Procedures

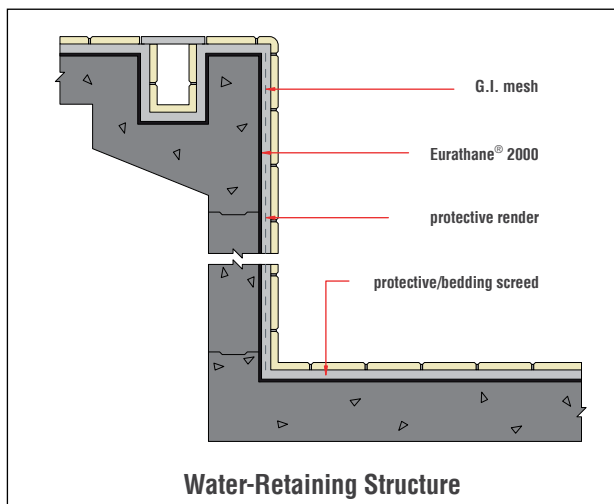
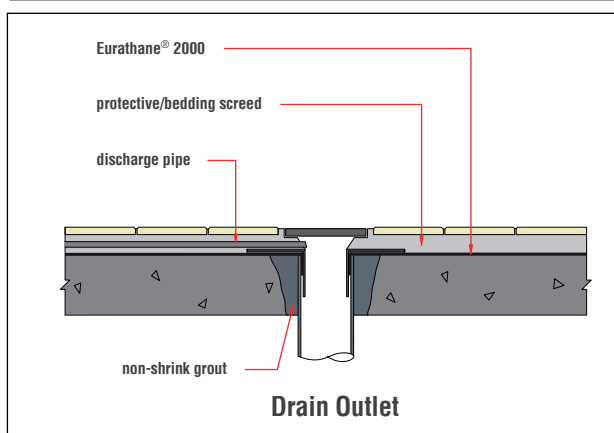
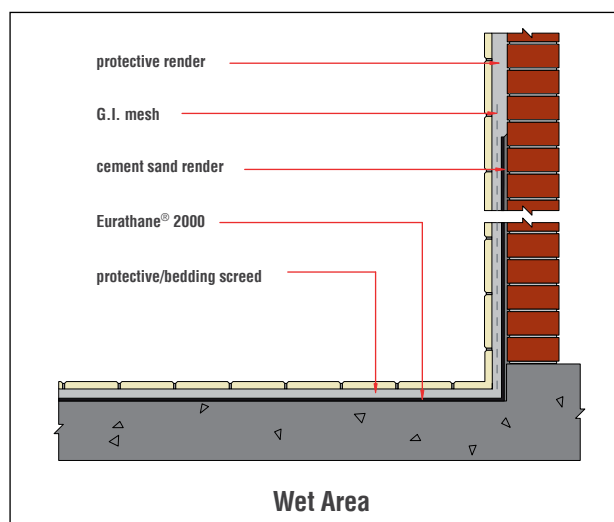
Eurathane® 2000 should be applied by brush, roller, squeegee or trowel to obtain a continuous, unbroken film. It should be applied at a rate of 0.75 litre/m²/coat. Two coats are recommended, allowing the first to fully dry prior to application of the second. A dry film thickness of 1.0 mm to 1.2 mm is recommended.

Extremely porous substrates should be primed with a high penetration solvent-based polyurethane primer prior to coating. Application must be made uniformly to avoid pin holes.

As with all waterproofing treatment, it is essential that **Eurathane® 2000** is protected from mechanical damage during subsequent construction work or backfilling.

Eurathane® 2000 is resistant to frost, but adhesion may be impaired when applied to substrates that are frozen or frosted. Treatment should be avoided if temperatures are likely to fall below 5°C during application.

Surfaces on to which **Eurathane® 2000** is to be applied should be dry, smooth, sound and free from honeycombs, protrusions, voids, laitance, dust, loose material, paint, oil, curing agent or any other contaminants. Blockwork should be smooth rendered and brickwork flush pointed.



Technical Specification

Solids content	>95%
Tack-free time @ 25°C	12 h
Re-coat time @ 25°C	12-24 h
Tensile strength (ASTM D412)	>1.2 N/mm ²
Elongation (ASTM D412)	>600%
Water vapour transmission (ASTM E96)	<30 g/m ² d
Crack bridging (ASTM C836)	>2 mm
Hardness shore A (ASTM D2240)	27
Adhesion to concrete (ASTM D903)	0.7 N/mm ²
Hydrostatic pressure resistance (ASTM D751)	0.65 N/mm ²
Recovery (ASTM D412)	94%
Flash point	59°C

Health and Safety

Eurathane® 2000 contains a flammable solvent. All necessary precautions should be taken in both storage and use. Store in closed containers in cool, dry conditions away from any ignition source.

Distributed by:

Note: The information provided in this brochure is based on current knowledge and experience and does not infer any legally binding assurance or warranty, expressed or implied. Intending purchasers should verify whether any changes to specifications or applications or otherwise have been made since the issue of this literature. Environmental-friendly recycled materials are used wherever possible and physical product properties including colour may differ due to source of raw materials used. Colour may also fade due to UV exposure. All components of the product are designed for specific application, design calculations and any variation and/or deviation therefrom shall be the responsibility of the specifier and/or user.



ELMICH PTE LTD www.elmich.com

Singapore: (+65) 6356 2800

info@elmich.com

Singapore | Australia | Germany | Switzerland | United States

